



**CHAIN OF COMMAND**

**402**

**I. PURPOSE**

The purpose of this policy is to provide a system that will ensure that each individual receives instruction for a particular task from only one supervisor or group. A chain of command will provide proper avenues of communication to resolve questions and concerns regarding Little Angel Preschool.

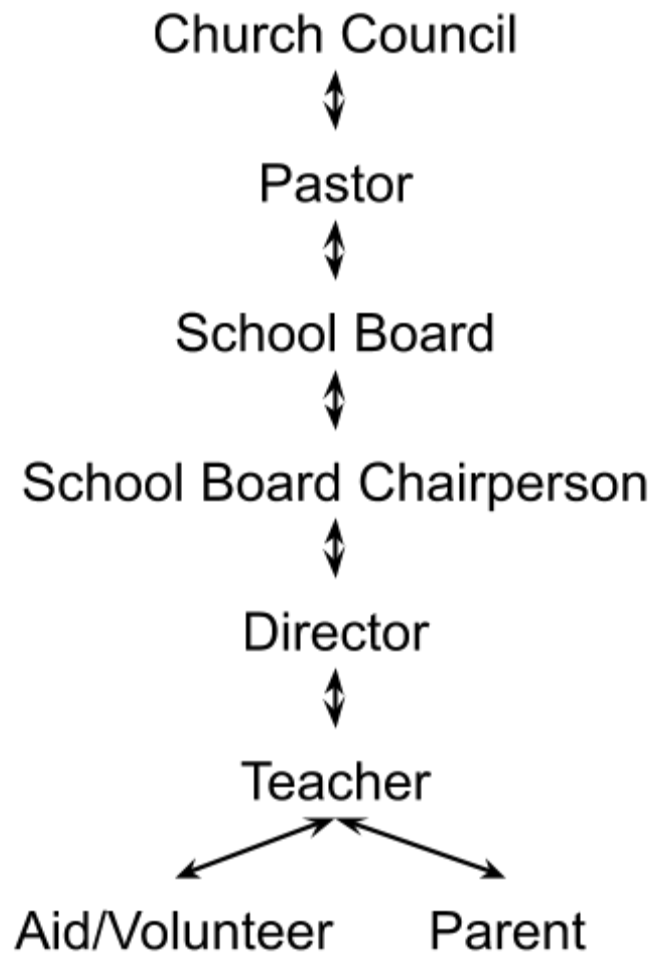
**II. GENERAL STATEMENT OF POLICY**

In the event of a question or concern employees and participants should go through each level of command in the chain of command one step at a time until the problem is resolved or the question is answered. If the next person in the chain of command is the individual in which a concern is about, then move past that person and continue going through the chain of command one step at a time.



Little Angel Preschool

Chain of Command



ADOPTED: 6/3/2019